

ZIEHM Vision RFD Hybrid Edition Cardio

The mobile alternative to
conventional cardiac CathLabs

Key Features

- 32" 4K UHD color display, with RealView>4K and Image Insights on an Articulating Monitor Arm
- Endovascular Navigation integrated in our All-in-one solution or combined with EndoNaut
- Pulsed monoblock generator with 30 kW power performance for demanding clinical applications
- Full control of the 4 motorized axes with variable isocenter
- Reduced operating costs in comparison to conventional cardiac CathLabs

Product Overview

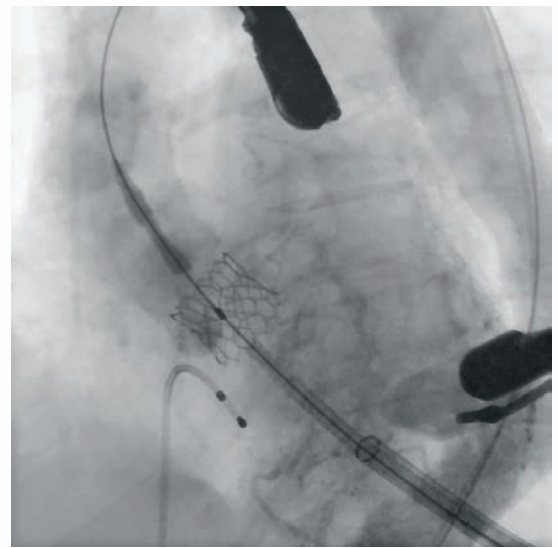
The Ziehm Vision RFD Hybrid Edition Cardio¹ is a powerful mobile imaging solution that instantly transforms any OR into a hybrid suite or mobile CathLab - without the cost or delays of fixed installations. Its compact footprint and low operating costs make it ideal for hospitals seeking flexibility and efficiency. Featuring a 30 kW pulsed monoblock generator and RealView>4K: true 2 k x 2 k imaging, it delivers exceptional image quality for complex cardiac procedures like TAVI. Integrated Endovascular Navigation², SmartDose technology, and full motorization support long interventions while minimizing radiation exposure. It's precision, performance, and mobility - redefined.



Articulating Monitor Arm
offers versatile viewing options

At a Glance

Imaging technology	31 cm x 31 cm flat panel, 100 µm pixel size
Detector resolution (FD)	3 k x 3 k
Image Chain	2 k x 2 k (RealView>4K)
Image Insights	✓
Power generator	30 kW
Vascular Image Fusion	Stand-alone solution with EndoNaut / Integrated solution with Endovascular Navigation
Orbital movement	165 degrees
Engine	Full control of the 4 motorized axes
Vascular 3D Image Fusion	EndoNaut
Advanced Active Cooling (AAC)	✓
Ziehm Usability Concept ³	✓
SmartDose Concept ⁴	✓



Endovascular Navigation

Precision. Confidence. Efficiency.

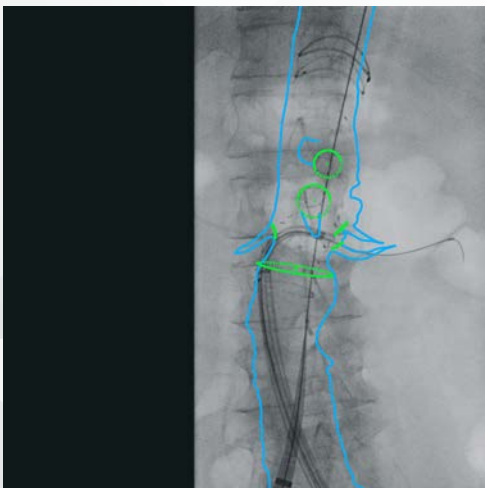
Experience the first image fusion technology fully integrated into a mobile C-arm, designed specifically for demanding endovascular procedures such as EVAR and FEVAR. Ziehm Endovascular Navigation empowers physicians with real-time intraoperative guidance, combining preoperative CT data and live fluoroscopic imaging for unmatched accuracy.

Highlights

- First image fusion technology integrated in a mobile C-arm
- Plan, perform and review your procedures
- Easy and fast fusion imaging thanks to AI-based algorithms
- Helps to reduce contrast media and radiation dose
- Automatic matching of preoperative CT data and intraoperative X-ray images for a quick and reliable workflow
- Automatic re-registration for a fast and reliable fluent workflow
- Adaptation to current situation in the OR without interaction of the user
- Flexible options: All-in-one solution or stand-alone solution with EndoNaut

Imaging for a wide range of clinical applications

- Vascular / Endovascular Surgery
- EP / Structural Heart
- Peripheral Vascular



6280 Hazeltine National Dr | Orlando, FL 32822 | USA
Phone: 407.615.8560 | Fax: 407.615.8561
Website: www.ziehm.com | [f](#) [X](#) [in](#) [@](#) [v](#)

Nationwide toll-free
**SERVICE & TECHNICAL
PHONE SUPPORT**
866.949.4346 



WEBSITE