

ZIEHM Vision RFD Hybrid Edition

The Comprehensive
Mobile Hybrid Solution

Key Features

- 32" 4K UHD color display, with RealView>4K and Image Insights on an Articulating Monitor Arm
- Endovascular Navigation integrated in our All-in-one solution or combined with EndoNaut
- Pulsed monoblock generator with 30 kW power performance for demanding clinical applications
- Full control of the 4 motorized axes with variable isocenter
- Reduced operating costs in comparison to conventional Hybrid ORs

Product Overview

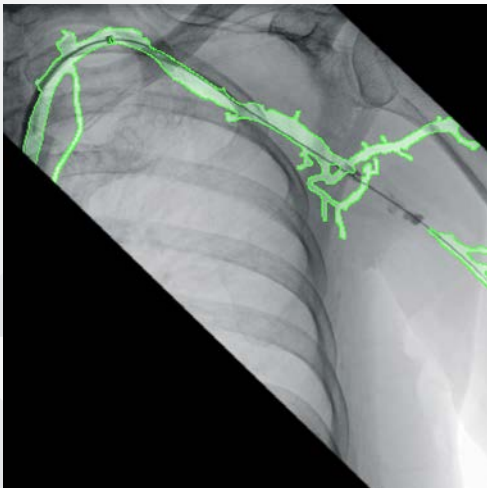
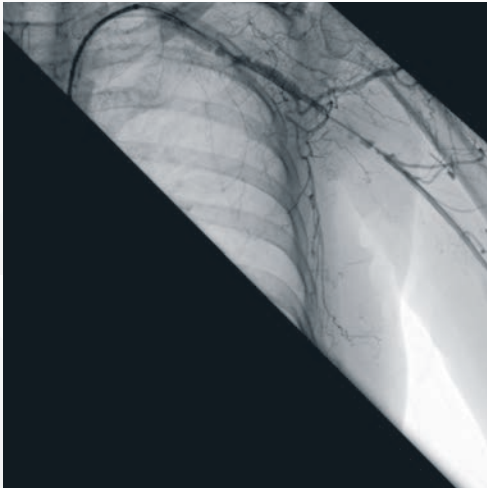
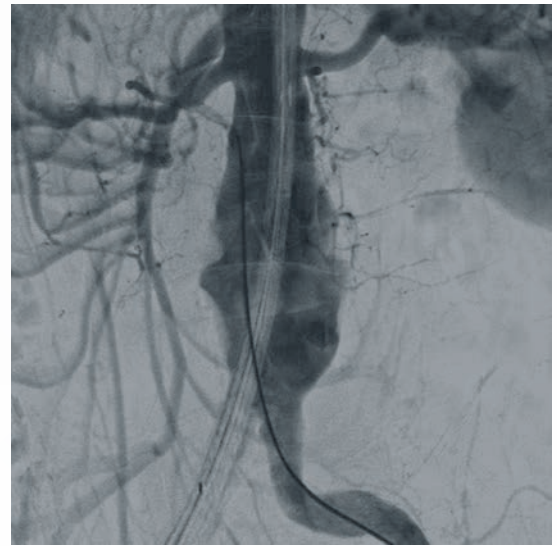
Designed for today's demanding cardiovascular, orthopedic, trauma, and spine procedures, the Ziehm Vision RFD Hybrid Edition¹ delivers premium performance with a powerful 30 kW generator and advanced CMOS technology.² Its mobile, motorized design integrates seamlessly into any OR - no modifications needed. Featuring the first Endovascular Navigation³ in a mobile C-arm, it enhances precision, reduces dose and contrast media, and accelerates workflows. Whether in trauma, spine, or cardiovascular cases, this system delivers the clarity and control you need - ready to go, anytime, anywhere.



Articulating Monitor Arm
offers versatile viewing options

At a Glance

Imaging technology	31 cm x 31 cm flat panel, 100 µm pixel size
Detector resolution (FD)	3 k x 3 k
Image Chain	2 k x 2 k (RealView>4K)
Image Insights	✓
Power generator	30 kW
Vascular Image Fusion	Stand-alone solution with EndoNaut / Integrated solution with Endovascular Navigation
Orbital movement	165 degrees
Engine	Full control of the 4 motorized axes
Vascular 3D Image Fusion	EndoNaut
Advanced Active Cooling (AAC)	✓
Ziehm Usability Concept ⁴	✓
SmartDose Concept ⁵	✓



Forefront of imaging technology

- Automatic optimization of dose and image quality with advanced anatomical programs
- Razor-sharp images due to smaller pixel size (100 µm pixel pitch)
- High detector quantum efficiency (DQE) for lower noise levels
- Ziehm Adaptive Image Processing (ZAIP) - Advanced insights in fast-moving objects

Ease of use

- Intuitive user interface for easy handling on up to three synchronized touch screens
- Color-coded scales and handles for unmistakable communication
- Easy and fast setup without OR preparation
- Compact footprint of 8.6 sq ft

Highlights

- Full control of the 4 motorized axes with variable isocenter, even at table side
- Avoidance of complex and expensive planning and construction phases
- Reduced operating costs in comparison to conventional Hybrid ORs
- Integrated energy storage for higher performance levels
- Dedicated SmartVascular workflow for advanced vascular procedures

Imaging for a wide range of clinical applications

- Vascular / Endovascular Surgery
- EP / Structural Heart
- Peripheral Vascular
- Orthopedic / Trauma
- Spine / Hip Surgery



6280 Hazeltine National Dr | Orlando, FL 32822 | USA
Phone: 407.615.8560 | Fax: 407.615.8561
Website: www.ziehm.com | [f](#) [X](#) [in](#) [@](#) [v](#)

Nationwide toll-free
**SERVICE & TECHNICAL
PHONE SUPPORT**
866.949.4346 
365 Days



WEBSITE